

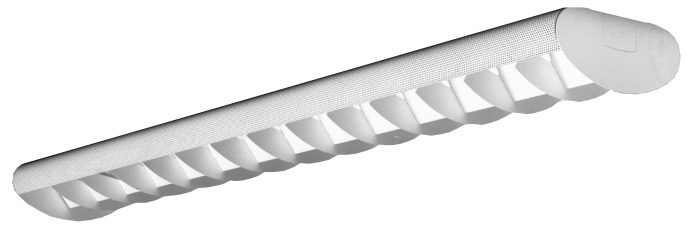
# EYE-Q Indirect/Direct or Direct **EYP SERIES 25° LOUVER**

Page 1 of 3

Suspended/Surface Fluorescent Luminaire, Perforated Side Reflectors, 25° Louver  
48" Length, 2 Lamp T8; 96" Length, 2 Lamp T8 in Tandem

## Features

- Ideal for schools, offices or stores.
- 60% uplight, 40% downlight distribution.
- Can be pendant or surface mounted.
- Top reflectors available for downlight only.
- 85.9% efficient.
- 33° x 25° steel louver with safety chain.
- 48" or 96" modular lengths.
- Can be stem or cable mounted at fixture joints.
- 20 gauge steel housing.
- 18 gauge steel fixture ends.
- 22 gauge perforated steel side reflectors with translucent white acrylic liner.
- 22 gauge steel louver.
- Electronic ballast for 4' T8 lamps is standard.
- 1-3/4" x 2" easy tear-out flush K.O. for thru wiring.
- Flat white acrylic baked enamel (post painted).
- Meets NYC Code requirements.
- Optional DALI ballast accepts digital dimming commands from computers, scene controllers and automatic control devices.



## Mounting Methods



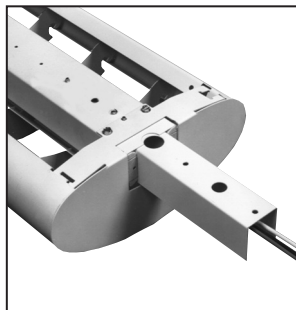
**Louver hinges** from either side.  
Safety chain is standard.



1-3/4" x 2" flush K.O. easy tear-out  
for thru wiring.

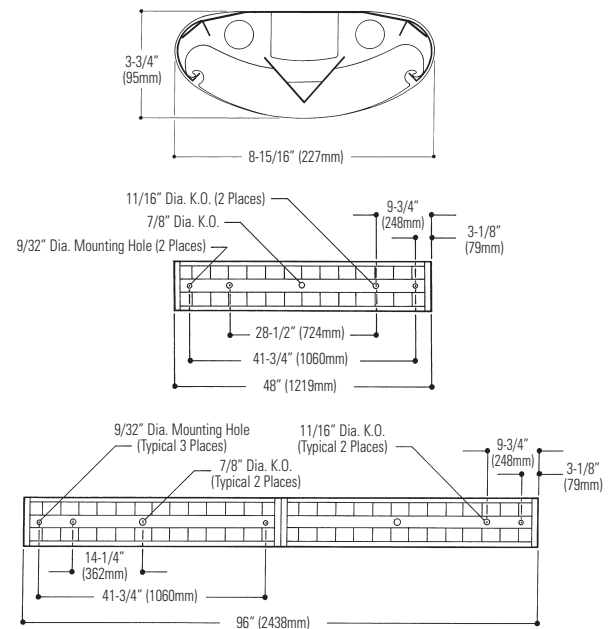


**Slide Grip Hanger** can be used at  
joint or along channel. (Can not be  
used with top reflector)  
Order Catalog Number  
**EY SLIDE GRIP.**



**Coupler** required for  
continuous row mounting.  
Order Catalog Number  
**EY COUPLER.**

## Dimensions



## Job Information Type:

**Job Name:**

**Cat. No.:**

**Lamp(s):**

**Volts/Ballast:**

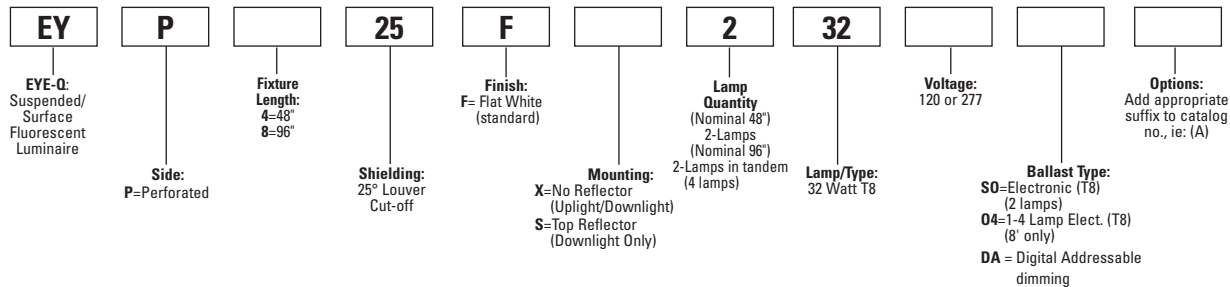
# EYE-Q Indirect/Direct or Direct **EYP SERIES 25° LOUVER**

Page 2 of 3

Suspended/Surface Fluorescent Luminaire, Perforated Side Reflectors, 25° Louver  
48" Length, 2 Lamp T8; 96" Length, 2 Lamp T8 in Tandem

## Ordering Information

Explanation of Catalog Number. Example: EYP825FX23212004



## Options & Accessories

**Stem And Canopy Sets:** Suspend fixture 6", 12", 18" or 24" from surface.  
Catalog Number: **ASC6 CSP** (6"), **ASC12 CSP** (12"), **ASC18 CSP** (18"),  
**ASC24 CSP** (24").

**Fusing:** Internal fast-blow fusing. Suffix: **A**.  
Internal slow-blow fusing. Suffix: **C**.

**Emergency Pack:** Factory-installed emergency power battery pack with  
charger and inverter, LP400 or equal, 120 or 277 volt. Suffix: **LP400**.

**Cable Hangers:** Adjustable 6"-60"

**Single Cable and Canopy:** Catalog Number **WC60**.

**Single Cable, Straight Cord and Canopy:** Catalog Number **WCC60**.

**Single Cable, Coil Cord and Canopy:** Catalog Number **WCCC60**.

## Specifications

**Materials:** Housing is die-formed 20 gauge cold rolled steel with full length  
channel for thru wiring.

**Fixture Ends:** 18 gauge cold rolled steel with 1-3/4" x 2" flush K.O. for thru  
wiring.

**Louver:** 22 gauge cold rolled steel.

**Side Reflectors:** Perforated 22 gauge cold rolled steel.

**Finish:** Post painted white acrylic baked enamel.

**Electrical:** Electronic instant start (<20 THD) thermally protected class "P"  
HPF non PCB, UL Listed, CSA Certified ballast for T8 lamps. If K.O. is within  
3" of ballast, use wire suitable for 90°.

**Labels:** I.B.E.W. UL and ULc Listed.

This product may have a mercury containing lamp. Manage in accord with  
Disposal Laws. See: [www.lamprecycle.org](http://www.lamprecycle.org)

**Job Information**

**Type:**

EYE-Q Indirect/Direct or Direct **EYP SERIES 25° LOUVER**


Page 3 of 3

Suspended/Surface Fluorescent Luminaire, Perforated Side Reflectors, 25° Louver

48" Length, 2 Lamp T8; 96" Length, 2 Lamp T8 in Tandem

PHOTOMETRY

MODEL NO. EYP825FX23212004



45 Industrial Way  
Wilmington, MA 01887  
(978) 657-7600

REPORT NO.: G98076  
CATALOG NO.: **EYP825FX23212004** PERP S  
LAMP(S): 2 F32DE, EACH RATED 2850 LUMENS  
LUMINAIRE: 14 CELLS LOUVER  
58.9W, M2-IN-T8 GP-D-120 ROTOROLA BALLAST

DATE: 12-4-1998

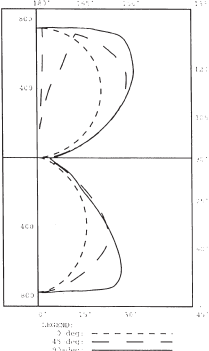
CANDLE DISTRIBUTION

FLUX	
0.0	22.5 45.0 67.5 90.0
0	779 779 779 779 779
5	766 771 774 781 783 74
15	701 713 741 778 797 211
25	605 629 704 794 841 329
35	492 535 661 782 831 412
45	370 436 567 576 580 394
55	243 321 353 310 306 284
65	129 181 178 190 201 178
75	68 81 91 104 109 98
85	20 35 54 71 76 59
90	5 32 58 79 84
95	26 71 100 124 124 104
100	138 227 238 244 243 239
115	276 388 438 435 431 399
125	410 502 611 637 636 508
135	523 590 720 770 783 527
145	615 657 745 826 853 464
155	684 705 752 799 815 348
165	728 737 524 770 778 205
175	747 747 166 753 755 63
180	748 748 748 748 748

ZONAL LUMEN SUMMARY

ZONE	LUMENS	%LAMP	%FIXT
0-35	612	10.8	12.5
0-45	1026	18.0	20.9
0-60	1704	29.9	34.8
0-90	2041	35.8	41.7
90-120	743	13.0	15.2
90-135	1250	21.9	25.5
90-150	2241	39.3	45.8
90-180	2857	50.1	58.3
0-180	4898	85.9	100.0

TOTAL LUMINAIRE EFFICIENCY = 85.9 %  
TOTAL REFLECTANCE OF PAINT = 89.0 %  
CIE TYPE : DIRECT INDIRECT  
PLANE : 0-DEG 90-DEG  
SPACING CRITERIA : 1.1 1.5  
SHIELDING ANGLE : 90 90



coefficients of utilization — zonal cavity method										
	RF	20			20			20		
	RC	80			50			30		
	RW	70	50	30	50	30	10	50	30	10
room cavity ratio	1	82	79	76	59	57	56	48	46	45
	2	75	69	64	52	49	46	42	40	38
	3	69	61	55	46	42	39	37	35	32
	4	63	54	47	41	37	33	33	30	28
	5	58	48	41	37	32	29	30	27	24
	6	53	43	36	33	29	25	27	24	21
	7	49	39	32	30	26	22	25	21	19
	8	46	35	29	27	23	20	23	19	17
	9	42	32	26	25	21	18	21	17	15
	10	40	29	23	23	19	16	19	16	14

Louver Shielding: 33° Crosswise  
25° Lengthwise

